



WORKFLOW SOFTWARE

ENERVISTA™ SOFTWARE SUITE

Simplify Every Aspect of Working with GE Multilin Devices.

The EnerVista™ Suite is designed to simplify the job functions of the Maintenance Staff, right through to the Facility Managers when using GE Multilin Devices. We have developed a Suite of tools to make the day-to-day processes of using GE Multilin Devices faster, easier and more secure.

ENERVISTA™ LAUNCHPAD

Easy to Use Device Setup and Document Management Toolset.

EnerVista™ Launchpad provides a full set of powerful device setup and support tools for GE Multilin devices. Also included are document management and automatic updating features that instantly notifies you of important releases of software and documentation.

ENERVISTA™ VIEWPOINT

Premium Monitoring, Engineering and Maintenance Toolsets.

EnerVista™ Viewpoint is a family of software packages that can simplify each step of using GE Multilin devices including the designing of protection and control logic, commissioning of relays, real time monitoring and data collection, and troubleshooting of your relays or system.

The three Viewpoint software offerings available are:

1. Viewpoint Monitoring
2. Viewpoint Engineer
3. Viewpoint Maintenance

ENERVISTA™ INTEGRATOR

Powerful OPC/DDE Communications Server.

EnerVista™ Integrator enables you to seamlessly integrate data from your GE Devices into a new or existing automation and control system.

ENERVISTA™ ENERGY AGGREGATOR

Energy Cost Allocation & Billing Software.

EnerVista™ Energy Aggregator will monitor, log and profile the energy consumption for all of the different locations in your facility and calculate the total cost of this energy to your business.

 **Eta "Power Monitoring"**

**Multilin
Partner**



www.etaprojects.co.uk
e-mail: powermonitoring@etaprojects.co.uk

EnerVista™ AGGREGATOR

ENERGY COST ALLOCATION AND BILLING SOFTWARE

EnerVista™ Energy Aggregator will monitor, log, and profile the energy consumption for all of the different locations in your facility. Once the data is collected, Energy Aggregator will calculate the total cost of energy to your business on an individual location basis or an accumulated site or grouped area. The rate structure applied to the consumed energy is fully programmable by the user.

With Energy Aggregator you can:

- Monitor and Track energy consumption for all parts of your facility
- Assign a rate structure and calculate cost of energy for different departments or tenants
- Compare calculated energy costs with billing received from the utility
- Perform load profiles on all of the different locations or equipment within your facility

How It Works...

1 Meters generate data on energy consumed

2 EnerVista™ Energy Aggregator collects and stores data from meters

3 EnerVista™ Energy Aggregator generates reports on energy consumption and totalizes energy cost



For a complete list of supported meters see [www.GEMultilin.com/enervista/Supported Devices](http://www.GEMultilin.com/enervista/Supported%20Devices)

Configurable Billing and Report Generation:

- Apply customized Simple or Complex rate structures to captured energy data
- Provide energy bills for the various departments or tenants in your facility
- Automatically generate energy cost and usage reports for any customized time periods

EnerVista™ VIEWPOINT MONITORING

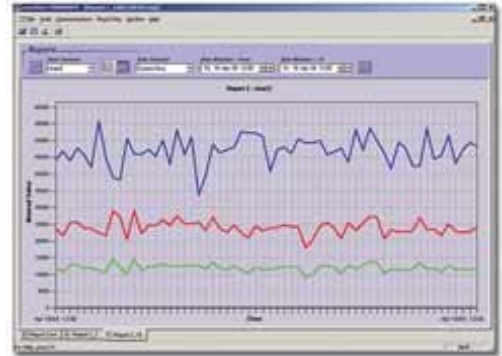
Easy to Use Monitoring and Data Recording for Small Systems

TRENDING REPORTS

Create a historical archive of monitored data from multiple GE Multilin Devices and store these logs indefinitely onto your hard drive for future reference.

Historical Record of Monitored Data

- Trend up to 500 data points from multiple devices
- Records data with 1 minute resolution indefinitely
- View data in time based Graphical or Tabular format
- Log over time the values of any analog data including Amps, Volts, Power, Energy and Demand



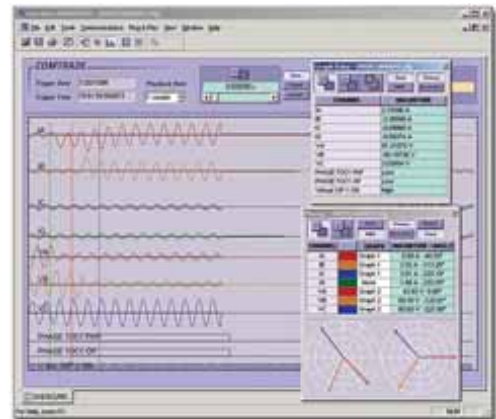
Log Power Level data from multiple devices at one time

GLOBAL COMTRADE VIEWER

Diagnose waveform fault data recorded in any power system device in a Time-based, Phasor Quantity, and Tabular format view.

View Waveforms Recorded From Any Device

- Convert waveforms that were stored in CSV format to COMTRADE compatible files (SR Family, PQM)
- Merge and Overlay waveforms that were recorded from multiple devices
- Identify the harmonics content in all monitored parameters



Analyze fault data recorded in any GE Multilin device

AUTOMATIC EVENT AND WAVEFORM RETRIEVAL

Automated archiving of Event and Waveform data from all GE Multilin Devices ensures you will always have data available for diagnosing any power system event.

Effortless Data Archiving

- Instantly detects and retrieves any new waveforms from all GE Multilin devices, EPM Meters and MicroVersa Trip Units, and saves these files on a network location
- Automatically acquires any new events recorded in all devices and stores them in system wide Sequence of Event Record
- Sort and Query through the System Event Record to view events categorized by date, device type, timestamp or customized criteria
- No configuration required

A screenshot of the Event Alarm Viewer software interface. It shows a table with columns for 'Event Type', 'Event Name', 'Event Status', 'Event Type', 'Event', 'Event Date', and 'Action/Comment'. The table contains several rows of event data, including event names like '110KV001A 110KV001A 110KV001A' and '110KV001A 110KV001A 110KV001A'. The table is sorted by event date.

Create system wide Sequence of Event Records to determine which equipment tripped off-line first

EnerVista™ VIEWPOINT MAINTENANCE

Device Health and Security Reporting Software

With a Single Click of your mouse, Viewpoint Maintenance will provide:

SIMPLE FAULT DIAGNOSTICS

Connect to the Front Port of any GE Multilin Device and Viewpoint Maintenance will automatically retrieve all fault diagnostic data and generate a report indicating the cause of the fault.

This software will also retrieve all Event Records, Waveforms, Settings Files, and device information that are needed to determine the cause of a fault and produce a single zipped file containing this data for sending to other engineers to assist in your troubleshooting.

View Waveforms Recorded From Any Device

- Event Record
- All Waveform Files
- Device Settings File
- Relay Order Code & Firmware Version



INSTANT DEVICE STATUS

Have instant monitoring of all power quantities and view the status of all Inputs and Outputs to identify the condition of all protected equipment. Plug into the Front Port of any GE Multilin Devices and Viewpoint Maintenance will detect all communication settings and create preconfigured monitoring screens that are tailored to your device and its wiring configuration.

The menu bar at the top of the screen will allow you to navigate between several easy to understand status screens. Each screen will show you different information that will assist you in determining the current operational status of your entire station.



View all Frequency, Current, Voltage and Power Levels using one click of your mouse



Quickly identify the status of your entire Transmission Line



Analyze the quality of the power to detect system imbalances



Instantly isolate the cause of the fault on your protected equipment